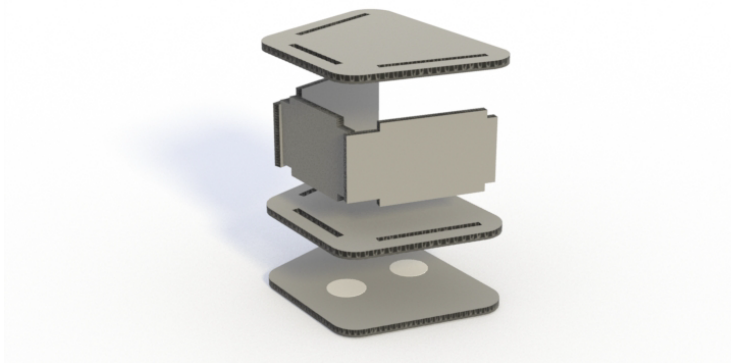


simple building instructions  
for more details visit [www.dorunrun.fun](http://www.dorunrun.fun)

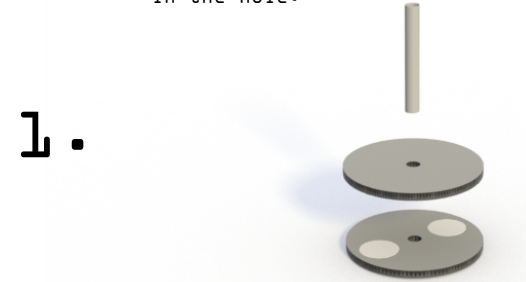
## Marble reservoir

marble reservoir, this is an easy one, just glue the pieces together according to the picture below

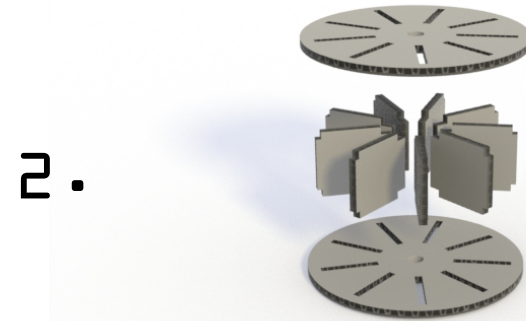


## Spinning wheel

build the base like this; first glue the cardboard circles then slide and glue the straw in the hole.



glue the wheel together like this



slide the wheel over the straw and finally the small circle over the straw. don't push this too tight so the wheel can rotate easy. then glue the small circle to the straw.

