

# do run run

magnetic cardboard marble run

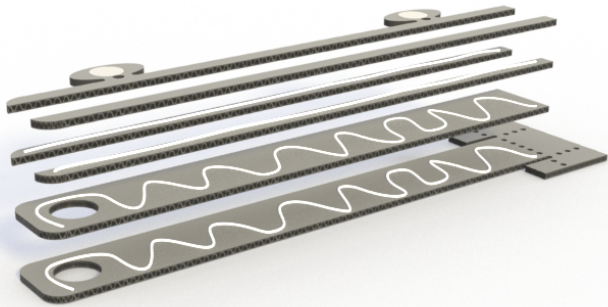
# run

simple building instructions  
for more details visit [www.dorunrun.fun](http://www.dorunrun.fun)

are you ready to do?! let's start

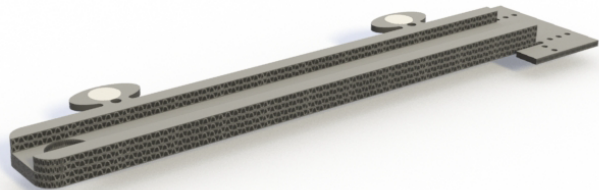
use the supplied glue to glue all the pieces together. start with the bottom, glue the next piece, let it dry for a while and work your way to the top. let the glue dry for several hours.

1.



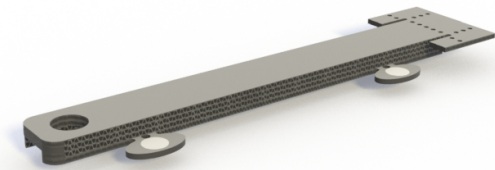
now you have your first do run run part!

2.



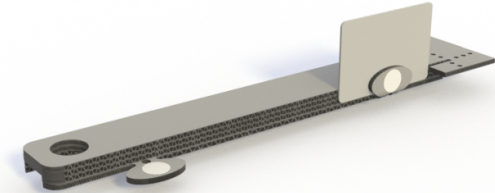
flip the part upside down

3.



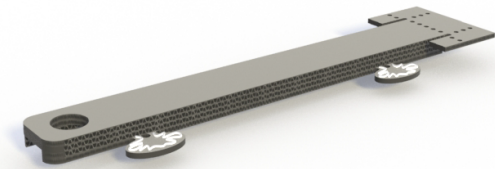
use a creditcard to push down on the flaps and bend the flap upwards.

4.



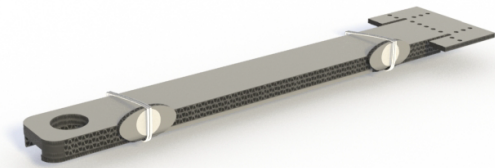
Bend the flaps back and apply glue to the flaps.

5.



use the supplied rubber bands to keep the flaps in place while the glue dries.

6.



fold and glue the flaps around the part to make the end stop for your marble run, use a rubberband to keep it in place while the glue dries.

7.

